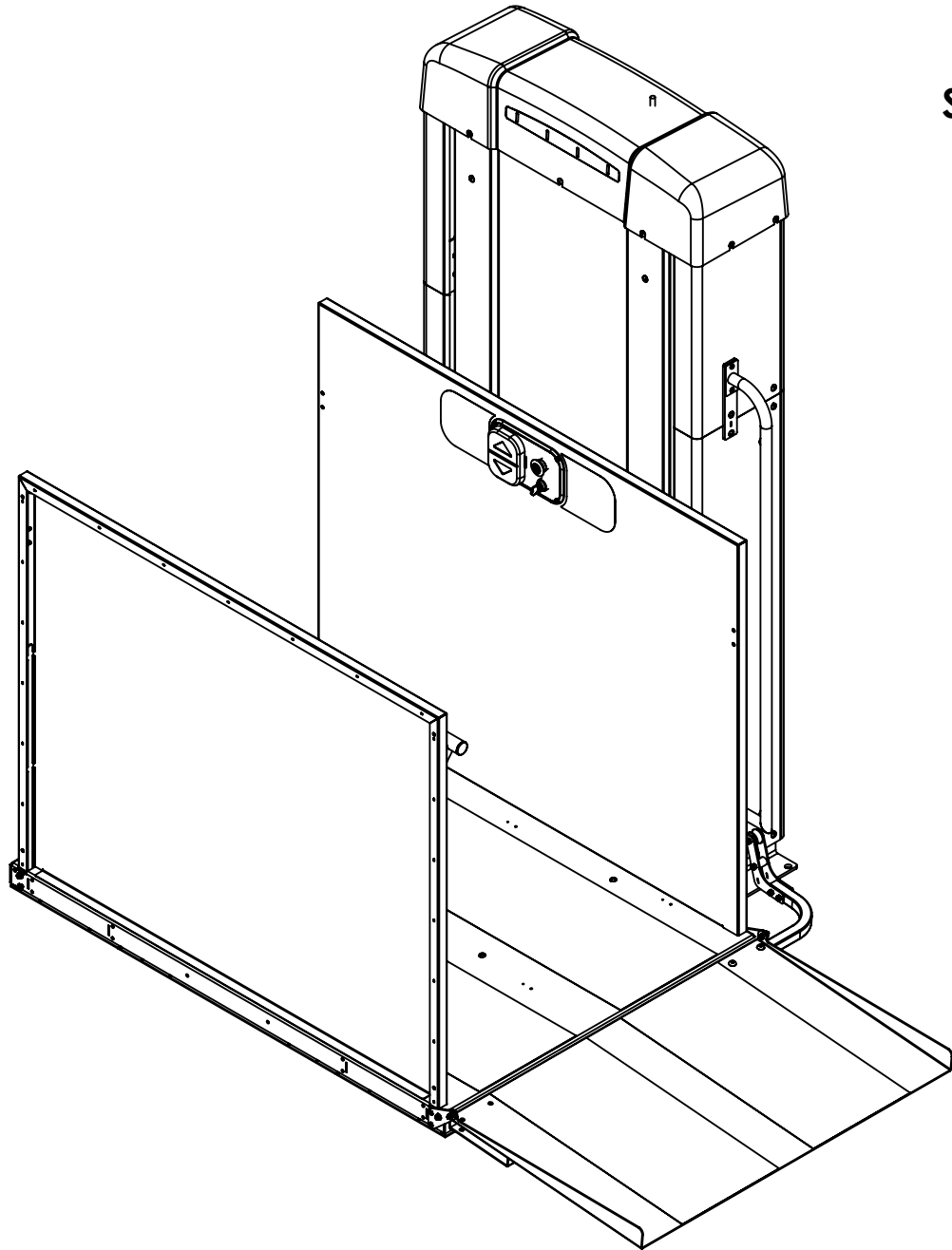


TYPICAL DRAWING
VPL UNENCLOSED NO PIT
STRAIGHT THRU PLATFORM

REVISIONS				
REV.	DESCRIPTION	BY	CHK	DATE
A	INITIAL RELEASE, ECO-005013	CJP	DN	16APR20



PRODUCT SPECIFICATIONS

RATED LOAD:	750 LBS (340 KG) MAXIMUM
INPUT POWER SOURCE:	1 110-120 VAC, 20 AMP, 60 HZ DEDICATED SERVICE
-AC POWERED UNIT:	BASE 2X 12 V BATTERIES (NOT AVAILABLE FOR VPL800-1400)
-OPT BATTERY BACKUP UNIT:	PLUS 4X 12 V BATTERIES
DRIVE:	2/3 HP, 26:1 GEARMOTOR W/BRAKE, 90 VDC,
-AC POWERED UNIT:	INTERMITTENT DUTY, CLASS H
DRIVE:	1" DIAMETER, 0.1" PITCH, 10 START ACME SCREW (1" LEAD)
LIFT SPEED:	7-10 FEET/MINUTE
SAFETY:	MOTOR FRICTION BRAKE AND ELECTRIC BRAKE, OVERSPEED GOVERNOR, BACKUP ACME NUT, SAFETY PAN, E-STOP, OVERLOAD SENSING, OVER TEMPERATURE SENSING, PERFORMANCE MONITORING, BATTERY MONITORING (ON BATTERY BACKUP UNITS)

SPECIFICATIONS SUBJECT TO CHANGE WITH OR WITHOUT NOTICE.

DESIGN AND REGULATORY REQUIREMENTS

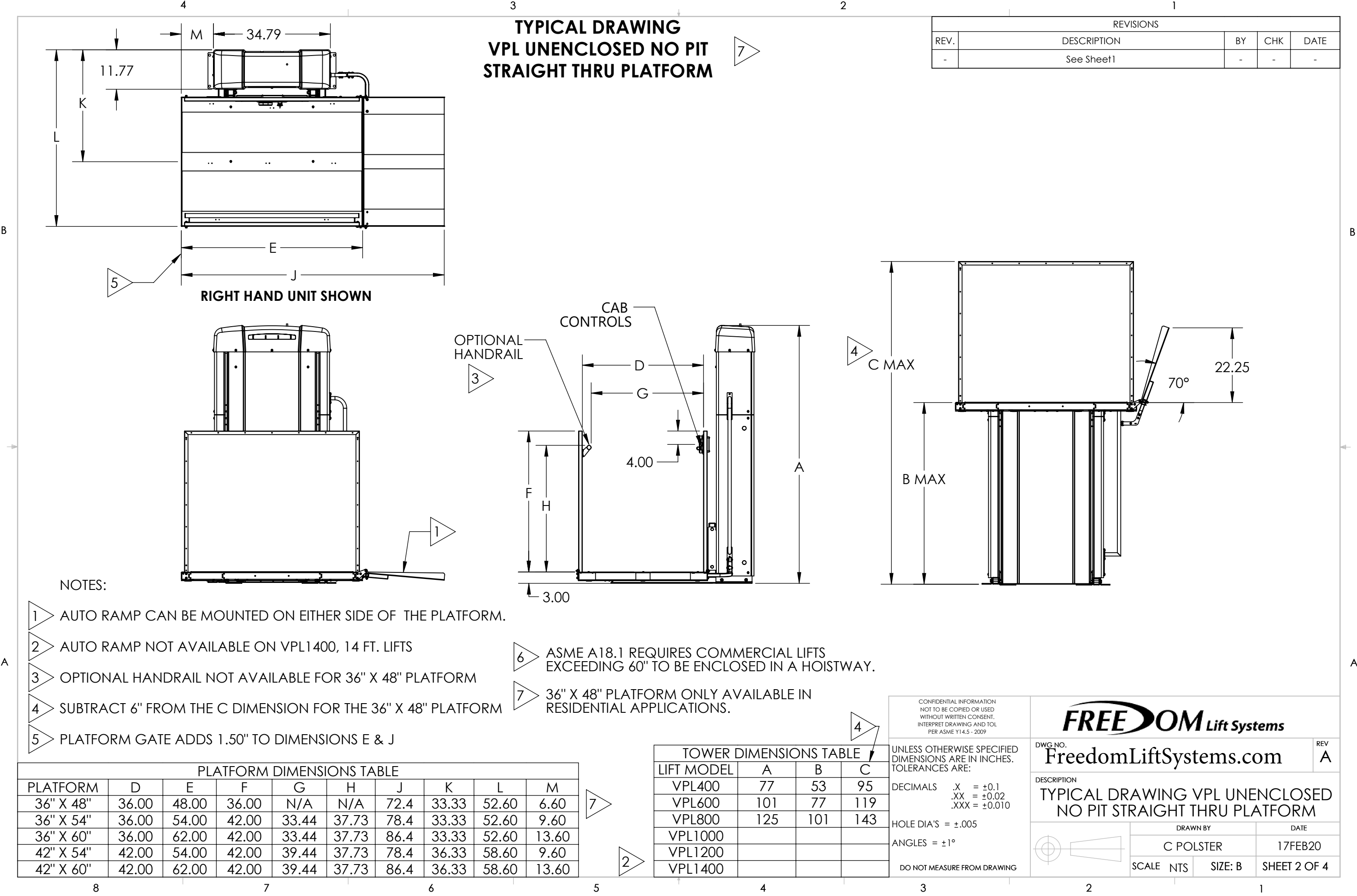
USA FOOD & DRUG ADMINISTRATION: CLASS II, 510(K) EXEMPT FILE NO. 890.3930, PRODUCT CODE: PCE

- DESIGNED IN COMPLIANCE WITH THE FOLLOWING CODES:
- ASME A18.1 SAFETY STANDARD FOR PLATFORM LIFTS AND STAIRWAY CHAIRLIFTS (SECTIONS 2 AND 5)
 - CSA B44.1/ASME A17.5 ELEVATOR AND ESCALATOR ELECTRICAL EQUIPMENT
 - ICC ANSI A117.1 ACCESSIBLE AND USABLE BUILDINGS AND FACILITIES
 - NFPA 70 NATIONAL FIRE PROTECTION AGENCY - NATIONAL ELECTRICAL CODE
 - ETL CERTIFIED - CONTROL NUMBER 3148125

FDA INDICATION OF USE STATEMENT

THE HIGHLANDER II VERTICAL PLATFORM LIFT IS TO ASSIST IN THE TRANSFER OF PATIENTS OR A MOBILITY IMPAIRED PERSON, UP AND DOWN BETWEEN LEVELS OF A RESIDENTIAL OR COMMERCIAL FACILITY.

CONFIDENTIAL INFORMATION NOT TO BE COPIED OR USED WITHOUT WRITTEN CONSENT. INTERPRET DRAWING AND TOL PER ASME Y14.5 - 2009		FREEOM Lift Systems	
UNLESS OTHERWISE SPECIFIED DIMENSIONS ARE IN INCHES. TOLERANCES ARE:		DWG NO.	REV
DECIMALS .X = ±0.1 .XX = ±0.02 .XXX = ±0.010		ENG-000840	A
HOLE DIA'S = ±.005 ANGLES = ±1°		DESCRIPTION TYPICAL DRAWING VPL UNENCLOSED NO PIT STRAIGHT THRU PLATFORM	
DO NOT MEASURE FROM DRAWING		DRAWN BY	DATE
		C POLSTER	17FEB20
		SCALE NTS	SIZE: B
		SHEET 1 OF 4	



**TYPICAL DRAWING
VPL UNENCLOSED NO PIT
STRAIGHT THRU PLATFORM**

REVISIONS				
REV.	DESCRIPTION	BY	CHK	DATE
-	See Sheet1	-	-	-

NOTES:

- 1 AUTO RAMP CAN BE MOUNTED ON EITHER SIDE OF THE PLATFORM.
- 2 AUTO RAMP NOT AVAILABLE ON VPL1400, 14 FT. LIFTS
- 3 OPTIONAL HANDRAIL NOT AVAILABLE FOR 36" X 48" PLATFORM
- 4 SUBTRACT 6" FROM THE C DIMENSION FOR THE 36" X 48" PLATFORM
- 5 PLATFORM GATE ADDS 1.50" TO DIMENSIONS E & J
- 6 ASME A18.1 REQUIRES COMMERCIAL LIFTS EXCEEDING 60" TO BE ENCLOSED IN A HOISTWAY.
- 7 36" X 48" PLATFORM ONLY AVAILABLE IN RESIDENTIAL APPLICATIONS.

PLATFORM DIMENSIONS TABLE									
PLATFORM	D	E	F	G	H	J	K	L	M
36" X 48"	36.00	48.00	36.00	N/A	N/A	72.4	33.33	52.60	6.60
36" X 54"	36.00	54.00	42.00	33.44	37.73	78.4	33.33	52.60	9.60
36" X 60"	36.00	62.00	42.00	33.44	37.73	86.4	33.33	52.60	13.60
42" X 54"	42.00	54.00	42.00	39.44	37.73	78.4	36.33	58.60	9.60
42" X 60"	42.00	62.00	42.00	39.44	37.73	86.4	36.33	58.60	13.60

TOWER DIMENSIONS TABLE			
LIFT MODEL	A	B	C
VPL400	77	53	95
VPL600	101	77	119
VPL800	125	101	143
VPL1000			
VPL1200			
VPL1400			

CONFIDENTIAL INFORMATION
NOT TO BE COPIED OR USED
WITHOUT WRITTEN CONSENT.
INTERPRET DRAWING AND TOL
PER ASME Y14.5 - 2009

UNLESS OTHERWISE SPECIFIED
DIMENSIONS ARE IN INCHES.
TOLERANCES ARE:
DECIMALS .X = ±0.1
.XX = ±0.02
.XXX = ±0.010
HOLE DIA'S = ±.005
ANGLES = ±1°
DO NOT MEASURE FROM DRAWING

FREEOM Lift Systems

DWG NO. **FreedomLiftSystems.com** REV **A**

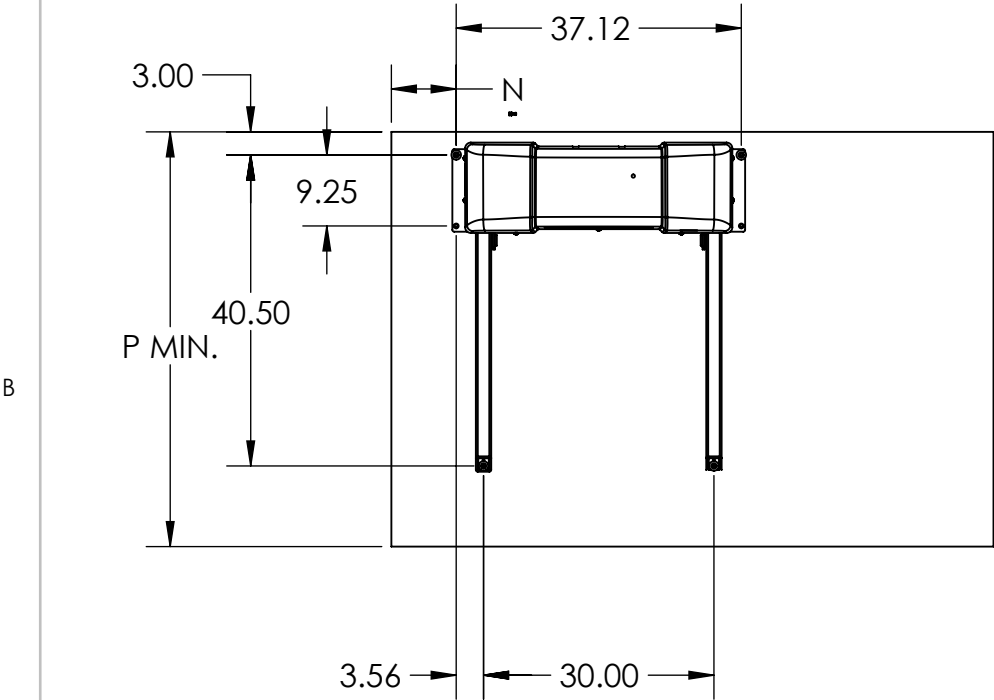
DESCRIPTION
**TYPICAL DRAWING VPL UNENCLOSED
NO PIT STRAIGHT THRU PLATFORM**

DRAWN BY
C POLSTER
SCALE NTS
SIZE: B

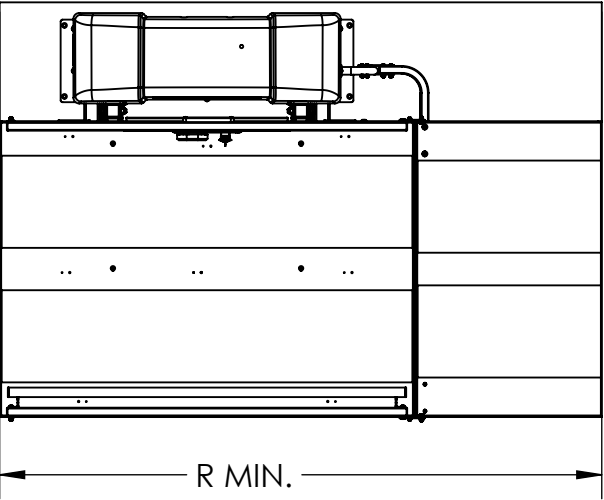
DATE
17FEB20
SHEET 2 OF 4

TYPICAL DRAWING
VPL UNENCLOSED NO PIT
STRAIGHT THRU PLATFORM

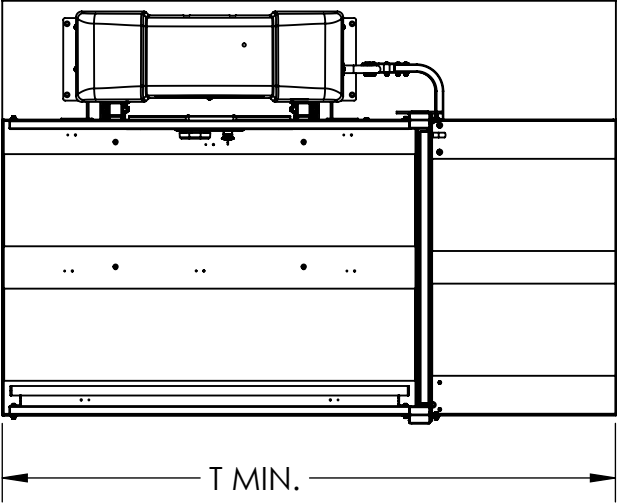
REVISIONS				
REV.	DESCRIPTION	BY	CHK	DATE
-	See Sheet1	-	-	-



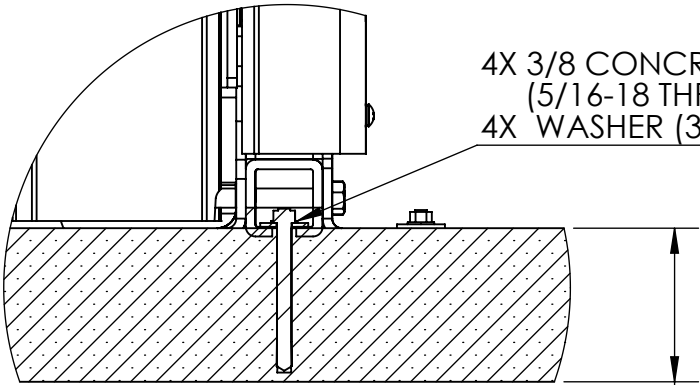
CONCRETE PAD DETAIL



LIFT WITH AUTO RAMP



LIFT WITH GATE AND AUTO RAMP



SECTION VIEW
OF CONCRETE ANCHOR
(NOT TO SCALE)

4X 3/8 CONCRETE ANCHOR
(5/16-18 THREAD)
4X WASHER (3/8 X 1.25 X .10)

4.00 MIN
3500 PSI REINFORCED CONCRETE RECOMMENDED

PAD DIMENSIONS (MINIMUM)				
PLATFORM	N	P	R	T
36" X 48"	5.44	54.00	72.4	73.9
36" X 54"	8.44	54.00	78.4	79.9
36" X 60"	12.44	54.00	86.4	87.9
42" X 54"	8.44	60.00	78.4	79.9
42" X 60"	12.44	60.00	86.4	87.9

CONFIDENTIAL INFORMATION
NOT TO BE COPIED OR USED
WITHOUT WRITTEN CONSENT.
INTERPRET DRAWING AND TOL
PER ASME Y14.5 - 2009

UNLESS OTHERWISE SPECIFIED
DIMENSIONS ARE IN INCHES.
TOLERANCES ARE:

DECIMALS .X = ±0.1
.XX = ±0.02
.XXX = ±0.010

HOLE DIA'S = ±.005
ANGLES = ±1°

DO NOT MEASURE FROM DRAWING

FREEOM Lift Systems

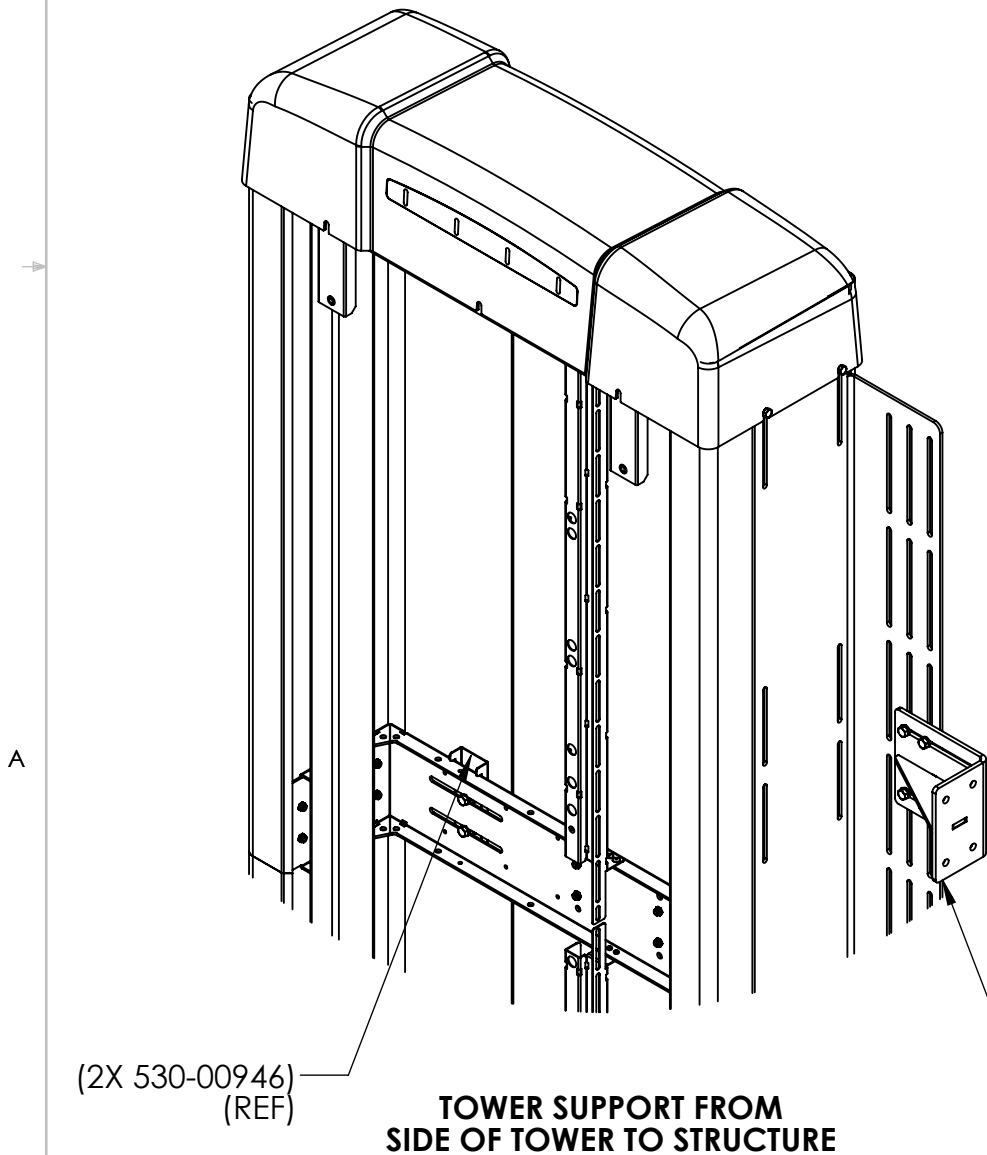
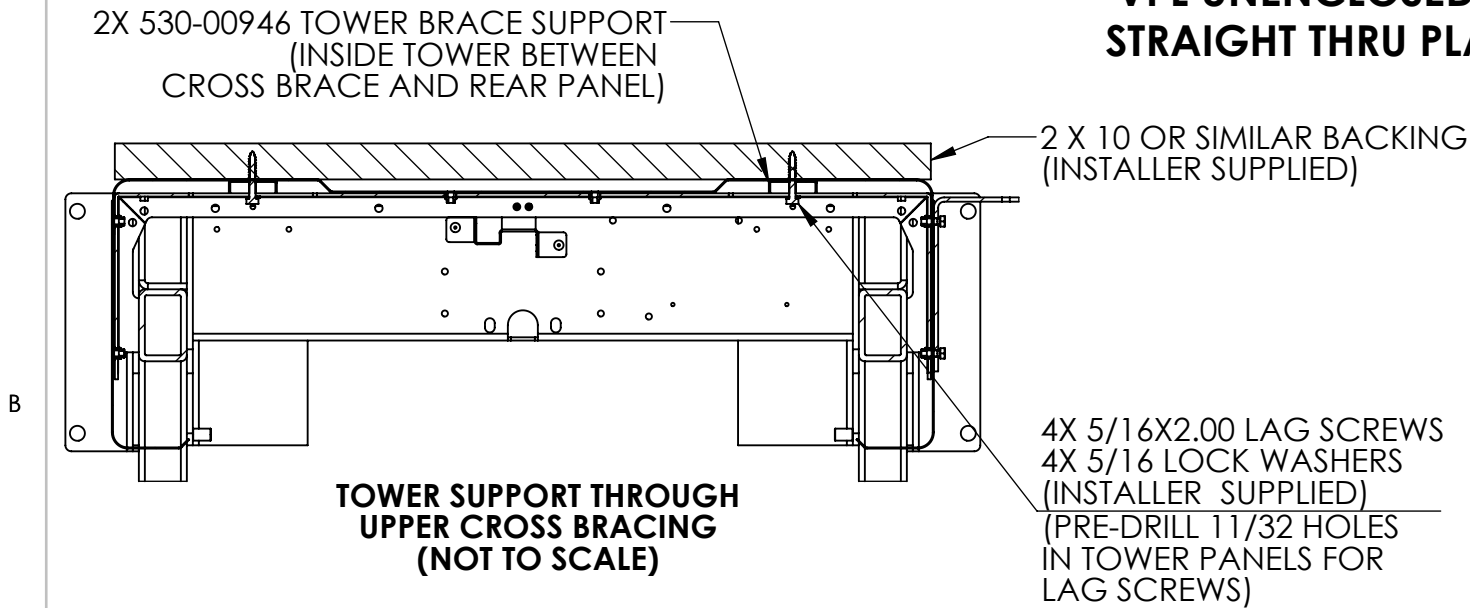
DWG NO. **ENG-000840** REV **A**

DESCRIPTION
**TYPICAL DRAWING VPL UNENCLOSED
NO PIT STRAIGHT THRU PLATFORM**

DRAWN BY C POLSTER		DATE 17FEB20	
SCALE NTS	SIZE: B	SHEET 3 OF 4	

TYPICAL DRAWING
VPL UNENCLOSED NO PIT
STRAIGHT THRU PLATFORM

REVISIONS				
REV.	DESCRIPTION	BY	CHK	DATE
-	See Sheet1	-	-	-



140-00148 TOWER BRACE KIT (48/54L PLTFM) OR
140-00149 TOWER BRACE KIT (54/60L PLTFM)
(INCLUDES HARDWARE SHOWN)

Site Construction Details

Electrical Requirements:
Check NFPA 70 and all applicable codes for all electrical and wiring requirements.

Platform Pathway Requirements:
Ensure the platform pathway is sufficiently illuminated, clear of any electrical conduit and wireways and there is sufficient headroom clearance (minimum of 79"-2007mm) per ASME A18.1 throughout floor-to-floor travel.

Floor Recommendations:
A 4" (102mm) thick, 3500 PSI minimum compressive strength, reinforced concrete pad is recommended. Refer to sheet 3 for minimum pad dimensions.

Tower Floor Anchoring:
VPL must be fastened to concrete pad using a minimum of four (4) 3/8" (5/16" bolt) x minimum 2-1/2" long concrete anchors suitable for the environment. Refer to Pad Details on sheet 3 for mounting hole locations. Follow selected concrete anchor manufacturer's guidelines and all applicable codes.

Tower Support:
Tower support is not required on lifts with travel under 8 feet. Lifts with travel of 8 feet or more are required to be supported appropriately. See views at left or installation manual for more details.

Top Landing Gate Attachment:
Refer to landing gate detail pages.

Platform to Top of Landing Sill Clearance:
ASME A18.1 code stipulates the platform-to-sill clearance at the upper landing shall not be less than 3/8" (9.5mm) nor exceed 3/4" (19.1mm). Follow all applicable codes.

Fascia Wall Requirements:
ASME A18.1 code stipulates that fascia should be smooth and/or non-perforated that guards the full length and width of the platform. The fascia shall be securely fastened from the upper landing sill down to ground level. The fascia must be able to support a 125-pound side load over any 4-inch square area. Follow all applicable codes.

CONFIDENTIAL INFORMATION NOT TO BE COPIED OR USED WITHOUT WRITTEN CONSENT. INTERPRET DRAWING AND TOL PER ASEM Y14.5 - 2009	FREEOM Lift Systems	
	DWG NO.	ENG-000840
	DESCRIPTION	TYPICAL DRAWING VPL UNENCLOSED NO PIT STRAIGHT THRU PLATFORM
	UNLESS OTHERWISE SPECIFIED DIMENSIONS ARE IN INCHES. TOLERANCES ARE: DECIMALS .X = ±0.1 .XX = ±0.02 .XXX = ±0.010 HOLE DIA'S = ±.005 ANGLES = ±1° DO NOT MEASURE FROM DRAWING	REV A
DRAWN BY C POLSTER		DATE 17FEB20
SCALE NTS		SIZE: B
		SHEET 4 OF 4