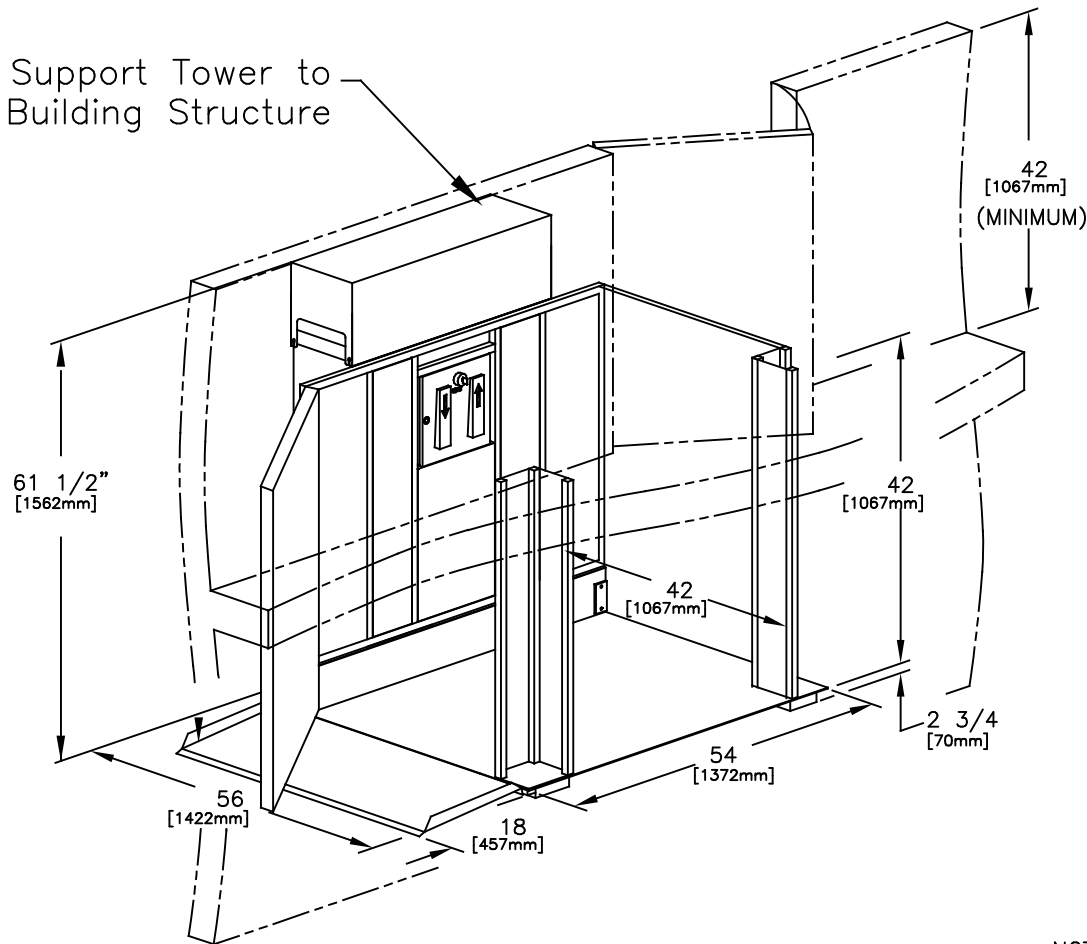


Support Tower to  
Building Structure



## APEB28ADJCOMLAL 42"x54"

### SPECIFICATIONS:

- 42" x 54" [1067mm x 1372mm] LIFT PLATFORM
- 56" x 54" [1422mm x 1372mm] FOOTPRINT
- 61 1/2" [1562mm] TOWER HEIGHT
- 0" - 28" [0mm - 711mm] LIFT RANGE
- MAXIMUM LOAD 750 lbs. [340 kg.]
- 8 F.P.M [0.04 M/S] LIFT SPEED
- SCREW NUT SYNCHRONOUS BELT DRIVE
- MOTOR: 1/2 H.P. 110V A.C.
- POWER SUPPLY: 110V/1PH/60HZ C/W 15A FUSED DISCON.
- NON-LOAD BEARING BACKUP SAFETY NUT ON LIFT SHAFT
- ZERO-LOAD START IN BOTTOM POSITION
- 42" CLEAR OPENING GATE (SWING) ON UPPER LANDING
- SOLID PLATFORM & UNDER PLATFORM SAFETY PLATE
- AUTO GATE


- ☐ Accepted as Shown
- ☐ Revise and Resubmit
- ☐ Accepted as Modified

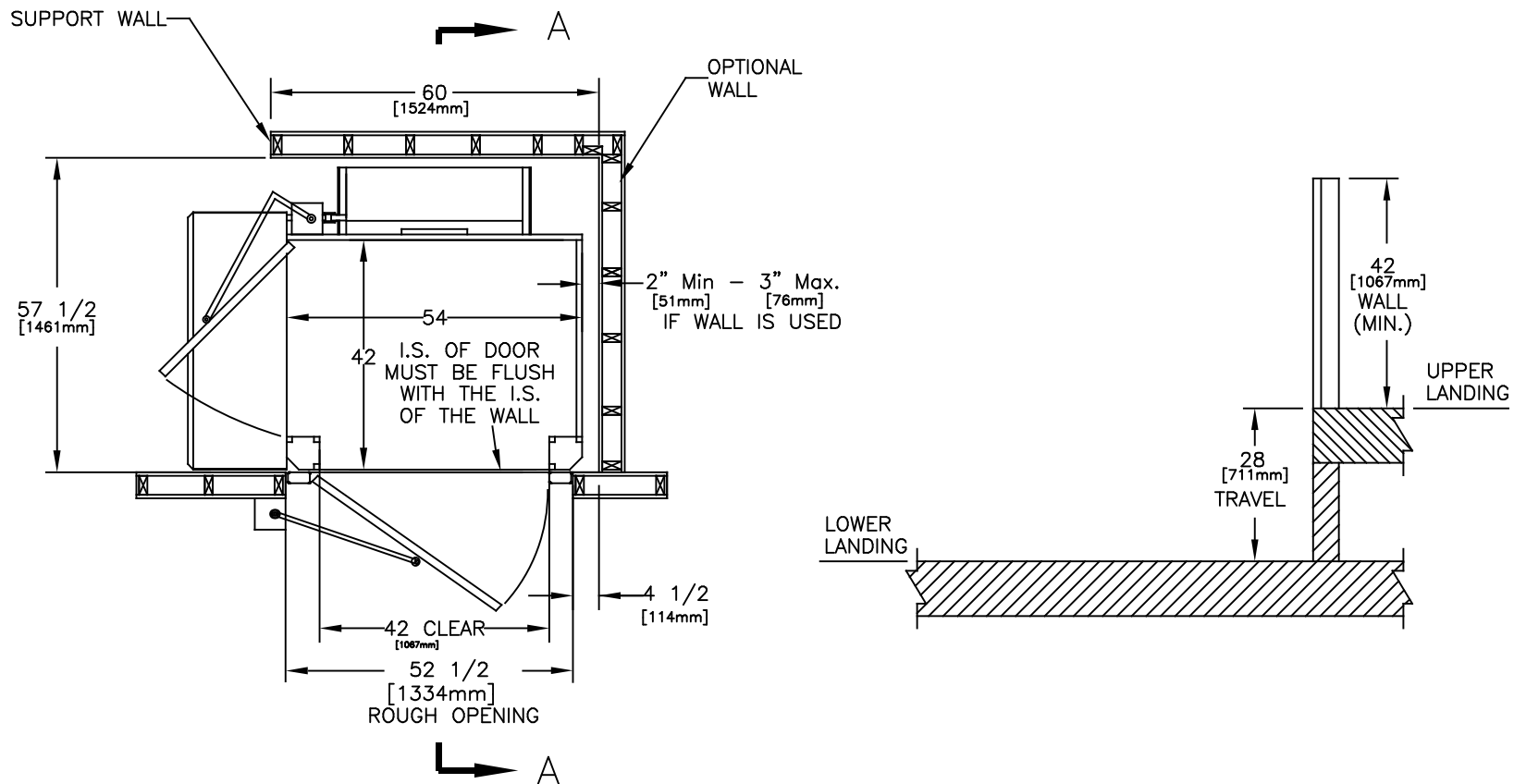
Date: \_\_\_\_\_


Per: \_\_\_\_\_

### NOTES:

- Dimensions are in inches & [mm]
- Designed to meet ASME A18.1-2014 Safety Code

JOB No.	TOTAL TRAVEL 28 711	INCHES mm	No. OF LANDINGS 2	<div> by Accessibility Professionals</div>			
LOCATION	SIDE ACCESS WITH CARRIAGE GATE SAMPLE DRAWINGS						
ARCHITECT				DWN. BY: KZ	INSTALLATION DETAILS AND SPECIFICATIONS		
				CHECKED BY:			
GENERAL CONTRACTOR				SCALE: N.T.S.	DATE: 04/08/17	DRAWING No. 1/2 28UCLDUGNCAT-AUTO	REV A



JOB No.	TOTAL TRAVEL 28 711 INCHES mm	No. OF LANDINGS 2	<div></div>			
LOCATION	SIDE ACCESS WITH CARRIAGE GATE SAMPLE DRAWINGS		INSTALLATION DETAILS AND SPECIFICATIONS			
ARCHITECT						
GENERAL CONTRACTOR			DWN. BY: KZ			
			CHECKED BY:			
			SCALE: N.T.S.	DATE: 04/08 / 17	DRAWING No. 2/2 28UCLDUGNCAT-AUTO	REV A